



ONE WELFARE

A Framework to improve Animal Welfare and Human Wellbeing

Rebeca García Pinillos



@onewelfare

@onewelfareworld



onewelfare

www.onewelfareworld.org

'ONE WELFARE'

- Background
- What is One Welfare?
- The One Welfare Framework
- Conclusions

'ONE WELFARE'



What is One Welfare?

BACKGROUND



5

'ONE WELFARE'



One Welfare describes the interrelationships between animal welfare, human wellbeing and the physical and social environment.

'ONE WELFARE'

Table 1. Relationship between One Welfare and the five freedoms, provisions and domains (*adapted from FAWC, 2003 and Mellor, 2016).

Five freedoms, provisions and domain*			One Welfare connections
<u>Nutrition</u>	Freedom from hunger, thirst and malnutrition	Ready access to fresh water and a diet to maintain full health and vigour	Provision of food and water to animals is key to secure their health and welfare, and to underpin human livelihoods
<u>Environment</u>	Freedom from discomfort	Providing a suitable environment including shelter and a comfortable resting area	Environmental resources are connected to both humans and animals Suitable accommodation for animals improves their well-being and coexistence with humans

'ONE WELFARE' FRAMEWORK



UNITED
NATIONS

EP



**United Nations
Environment Assembly of the
United Nations Environment
Programme**

UNEP/EA.5/Res.1

Distr.: General
7 March 2022

Original: English

United Nations Environment Assembly of the
United Nations Environment Programme
Fifth session
Nairobi (hybrid), 22 and 23 February 2021
and 28 February–2 March 2022

**Resolution adopted by the United Nations Environment
Assembly on 2 March 2022**

5/4. Animal welfare–environment–sustainable development nexus

Noting that the health and welfare of animals, sustainable development and the environment are connected to human health and well-being,

'ONE WELFARE'

- Help professionals understand and recognize the interconnections between their work with humans / animals /environment and wider society
- Highlight that impact of animal welfare work/policies goes beyond helping animals, and helps to stop suffering more widely, reaching humans and society.

'ONE WELFARE'

- ## Triple planetary crisis:
- climate change,
 - nature and biodiversity loss,
 - pollution and waste

2021 was a year in which environmental issues reached an unprecedented prominence on the global stage. The eyes of the world focused on the United Nations Climate Change Conference of the Parties (COP26) in Glasgow. While our leaders did not fully deliver, they kept the door open to holding global temperature rise to 1.5°C. Negotiators continued to flesh out the post-2020 global biodiversity framework – so that nations can reach an agreement at COP15 in 2022. Momentum to address pollution and waste grew, with nations agreeing to a global treaty to curb plastic pollution and all its impacts, and to phase out fossil fuels and other climate-changing chemicals. Progress was also made at the COPs focused on the ozone layer, mercury and hazardous waste.

Despite these achievements, there is much work to do on addressing the triple planetary crisis of climate change, nature and biodiversity loss, and pollution and waste – particularly as the chance to build back better after COVID-19 appears to have been lost. The University of Oxford's Global Recovery Observatory, supported by the UN Environment Programme (UNEP), showed that less than 20 per cent of total recovery spending was green. As UNEP marks its 50th anniversary, its mission to inspire, inform and enable nations to live in harmony with nature has never been more critical.

[READ MORE](#)

The One Welfare framework





'ONE WELFARE FRAMEWORK' – SECTION 1



Ref: National Link Coalition



‘ONE WELFARE FRAMEWORK’ – SECTION 1

**Domestic violence
victims have a cost of
8 million
paid work days/year**



‘ONE WELFARE FRAMEWORK’ – SECTION 1

The screenshot displays the WHO Eastern Mediterranean Region website. At the top, the WHO logo and 'Regional Office for the Eastern Mediterranean' are visible. A navigation bar includes links for Health topics, Data and statistics, Media centre, Information resources, Countries, Programmes, and About Us. A search bar is on the right. The main content area features a news article titled 'Levels of domestic violence increase globally, including in the Region, as COVID-19 pandemic escalates'. The article includes a large graphic of a virus particle. To the left of the article is a sidebar with links: Violence, injuries and disability; About the programme; Strategy/policy; Publications; Events and meetings; News; Relevant health topics; and Useful links. To the right is a 'Featured resources' section with links to 'Protecting people with disability during the COVID-19 pandemic', 'COVID-19 and violence against women in the Region', 'Reducing injury, disability, death and economic losses through road safety in the Eastern Mediterranean Region', and 'Road safety in the Eastern Mediterranean Region: facts from the global'. The article text states: 'Violence against women tends to increase in any emergency, including epidemics. Stress, disruption of social and protective networks, increased economic hardship and decreased access to services can exacerbate the risk of women suffering violence. The Eastern Mediterranean Region has the second highest prevalence of violence against'.



‘ONE WELFARE FRAMEWORK’ – SECTION 1



Refuge sees online traffic to its National Domestic Abuse Helpline website rise by 700%.

09

April

News, Press Release

Following a media push to ensure women experiencing domestic abuse know how they can access help and support during periods of lockdown, Sandra Horley CBE, Chief Executive of national domestic abuse charity Refuge said:

One Welfare Phoenix



One Welfare Phoenix is a new project designed to support the sustainable development goals and global reduction of violence by supporting the production and dissemination of practical guides to professionals to help identify and report the link between animal and human abuse and neglect, including the relation to trafficking.

This project is designed to bring together collective expertise across the world to develop global free access guidance for veterinary, medical and social services professionals as well as the public on section 1 of the One Welfare Framework: the link between animal and human abuse and neglect, providing a flexible space for local contexts to be built into the guidance by local groups.

Why a Phoenix? We were inspired by the deep symbolic significance and the beauty, power and strength of the Phoenix bird emerging from the fire and ashes magnificent and

ONE WELFARE PHOENIX KEY OBJETIVE

This project supports the UN Sustainable Development Goal targets as follows: SDG 3: strengthen the prevention and treatment of substance abuse, including narcotic drug abuse and harmful use of alcohol; SDG 5: Eliminate all forms of violence against all women and girls in the public and private spheres, including trafficking and sexual and other types of exploitation; SDG 16: target to significantly reduce all forms of violence and related death rates everywhere; SDG 17: Enhance international support for implementing effective and targeted capacity-building in developing countries to support national plans to implement all the sustainable development goals.



FARMING WORKING GROUP

GROUP LEADS



JOE BAILEY



MARISA ERASMUS

MEMBERS



DIMITAR NAKOV



MARIKO KANAMORI



ARVIND SHARMA



DAVID MARTIN



WORKING ANIMALS AND ANIMALS IN ENTERTAINMENT WORKING GROUP

GROUP LEADS



ANDREW MORRISON



GILLY MENDES FERREIRA

MEMBERS



HILLARY NOYES



TIM STAFFORD



KATE FLETCHER



FREDRICK VALDIVIA



FREE ROAMING WORKING GROUP

GROUP LEADS



MOHAMED NADER



RODRIGO NOVA

MEMBERS



RIITA DE CASSIA NHAM



VICKY PAL SINGH



TRACEY KING



NERIA ANSELCA



OUIDY KOULAVI



KARINA PISCO



COMPANIONSHIP WORKING GROUP

GROUP LEADS



ADELE LAU



EVELYN SEGREDO

MEMBERS



VICKY BETTISON



NATALIE WORDER



CATHERINE H. BICE



AMANDA LEPORE



ALICIA KENNEDY



'ONE WELFARE PHOENIX'



KEY PROJECT OBJECTIVE

Facilitate the exchange, publication and dissemination of information, experience and best practice in the area of animal and human abuse and neglect, including, where available the connections to the environment

Covering:

Companion animals;
Working animals;
Farm animals;
Wildlife and stray animals





'ONE WELFARE PHOENIX'

ONE WELFARE PHOENIX - KEY PROJECT OUTCOME

Develop global free access guidance for:

- Veterinary professionals,
- medical professionals,
- social services professionals,
- the public

'ONE WELFARE FRAMEWORK' – SECTION 2



The social implications of animal welfare



'ONE WELFARE FRAMEWORK' – SECTION 2



'ONE WELFARE FRAMEWORK' – SECTION 2

"Climate change is a hoax."



Climate scientists shocked by catastrophic floods in Germany

Flooding in German broke records and killed people.

By Christian Spencer | July 16, 2021



'ONE WELFARE FRAMEWORK' – SECTION 2



<https://www.youtube.com/watch?v=X4XGBBYQqkg>

'ONE WELFARE FRAMEWORK- - SECTION 3

Animal health and welfare, human wellbeing, food security and sustainability



‘MARCO ONE WELFARE’ – SECCION 3

Animal Welfare and farmer wellbeing

Instances also arise where the poor health or wellbeing of an owner or keeper may lead to the welfare of animals under their control being compromised. Effective welfare outcomes for the animals may require the holistic engagement of various animal and human health/wellbeing services. The use of a ‘One Health, One Welfare’ approach can help in resolving certain situations , and will be encouraged.



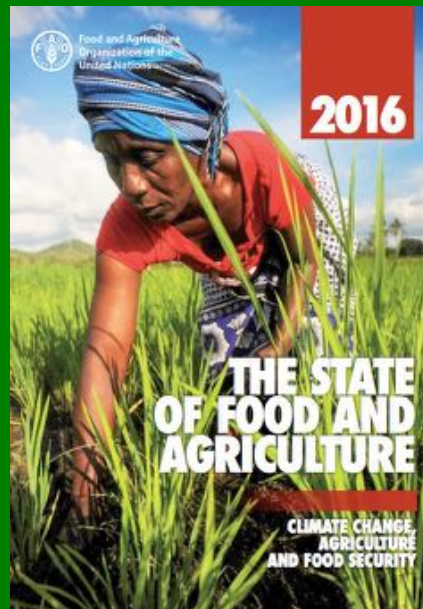
Ref: <https://www.gov.ie/en/publication/12d6a-animal-welfare-strategy/>



Sheep gather during a wildfire near Limni village on the island of Evia, about 160 kilometers (100 miles) north of Athens, Greece, Wednesday, Aug. 4, 2021. The European Union promised assistance Wednesday to Greece and other countries in southeast Europe grappling with huge wildfires after a blaze gutted or damaged more than 100 homes and businesses near Athens. (AP Photo/Thodoris Nikolaou)

'ONE WELFARE FRAMEWORK- - SECTION 3

Improved animal welfare – improved food security and sustainability



<http://www.fao.org/publications/sofa/2016/en/>

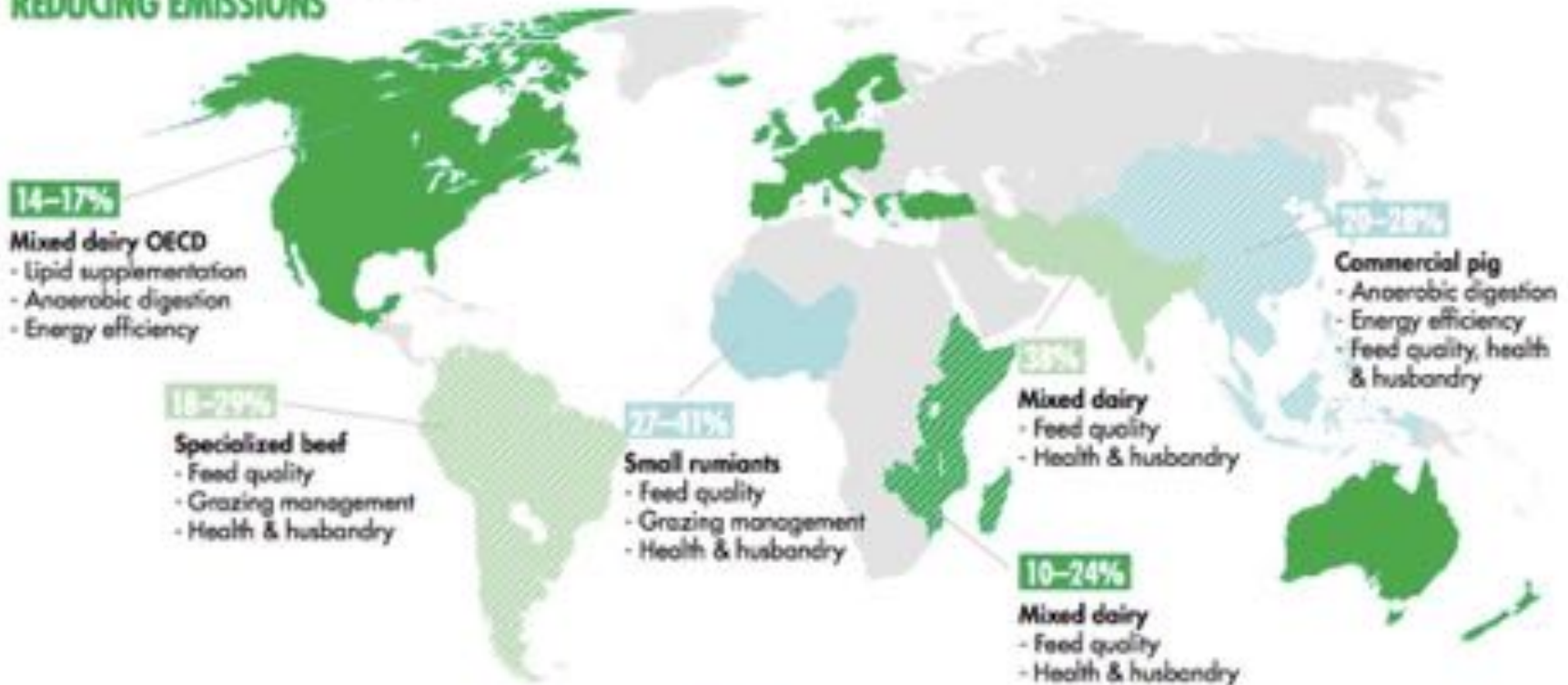
'ONE WELFARE FRAMEWORK- - SECTION 3

Animal Health and Welfare, Environmental Protection, Food Security and Sustainability

raise productivity. In the livestock sector, the general adoption of sustainable practices could cut livestock methane emissions by up to 41 percent while also increasing productivity through better animal feeding, animal health and herd structure management. However, the

'ONE WELFARE FRAMEWORK- - SECTION 3

EFFICIENT PRACTICES KEY TO REDUCING EMISSIONS



Greenhouse gas emissions in the livestock sector can be reduced by **14-41%** through adoption of feasible improvements in: feed quality, animal health and husbandry, manure management, energy-use efficiency.

'ONE WELFARE FRAMEWORK' – SECTION 4



Assisted Interventions Involving Animals, Humans and the Environment



'ONE WELFARE FRAMEWORK' – SECTION 4



Interactions between animals, humans and the environment



Ref: Case Study 17 – Green Chimneys (by Green Chimneys, USA)

'ONE WELFARE FRAMEWORK' – SECTION 5



Sustainability: Connections Between Biodiversity, the Environment, Animal Welfare and Human Wellbeing



'ONE WELFARE FRAMEWORK' – SECTION 5



'ONE WELFARE FRAMEWORK' – SECTION 5



Food and Agriculture Organization
of the United Nations

LIVESTOCK DIVERSITY HELPS COPE WITH CLIMATE CHANGE

Livestock diversity or **animal genetic resources** are terms used to describe the pool of **38 species** of domesticated birds and mammals with more than **8 800 breeds** currently used for food and agriculture.

Did you know?
There are 800 breeds of cattle in the world, each with different valuable traits



LIVESTOCK ADAPTIVE TRAITS

- Thrive on poor quality feed
- Tolerate extreme temperatures
- Tolerate or resist diseases
- Tolerate drought
- Walk long distances for water or food
- Produce meat, eggs, and milk, even under stressful conditions

WHAT ARE THE BENEFITS FOR PEOPLE

- Increase resilience to hazards including drought, floods and disease
- Allow lands where no crops can grow to be productive
- Allow for relocation of species or breeds better adapted to harsh climatic conditions
- Form and maintain landscapes through grazing and manure fertilization, while facilitating biodiversity
- Provide diverse income and food sources for millions of people

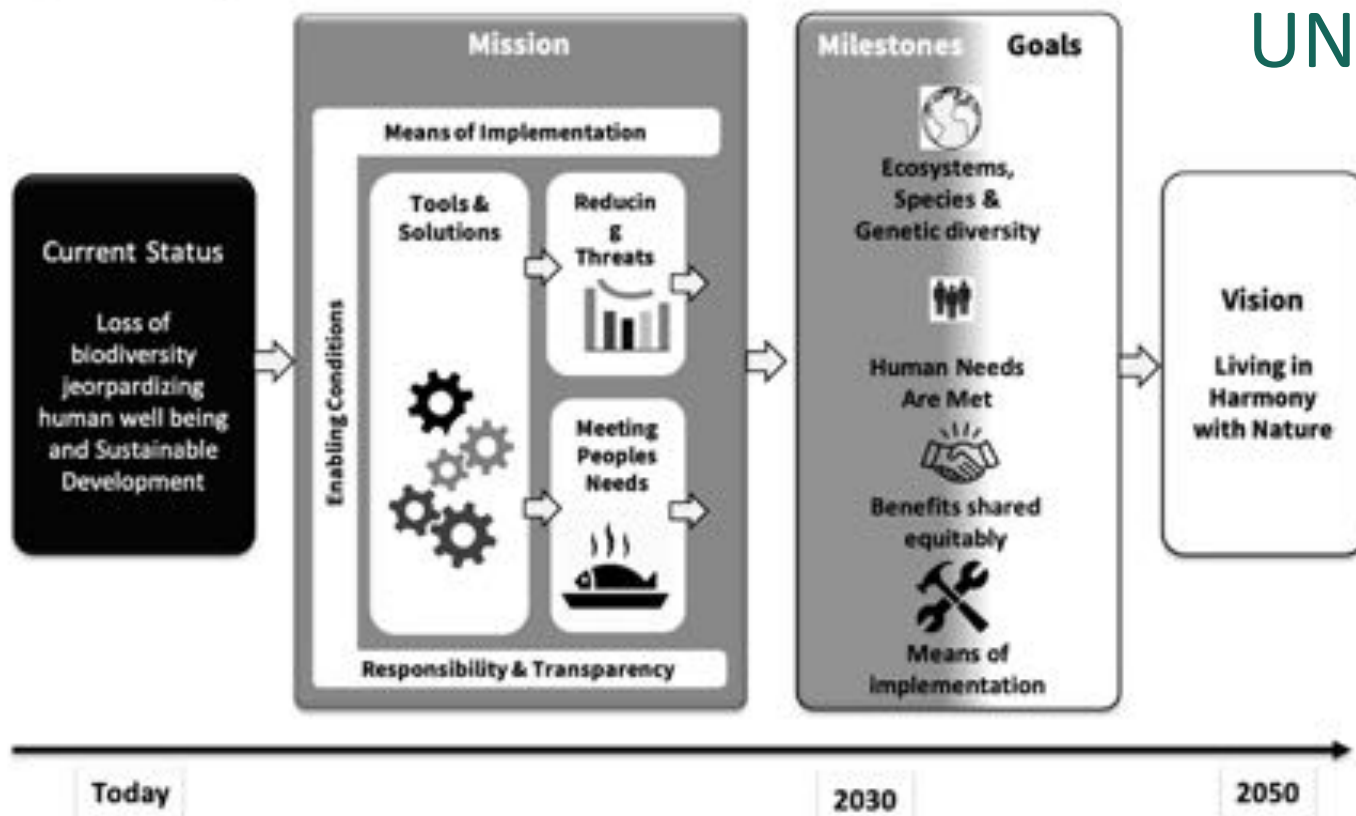
'ONE WELFARE FRAMEWORK' – SECTION 5



Convention on
Biological Diversity

UNEP

Figure 1. Theory of change of the framework





'ONE WELFARE FRAMEWORK' – SECTION 5



Research articles

Climate change and lithium mining influence
flamingo abundance in the Lithium Triangle

Climate change and lithium mining influence flamingo abundance in the Lithium Triangle

Jorge S. Gutiérrez , Johnnie N. Moore, J. Patrick Donnelly, Cristina Dorador, Juan G. Navedo and Nathan R. Senner 

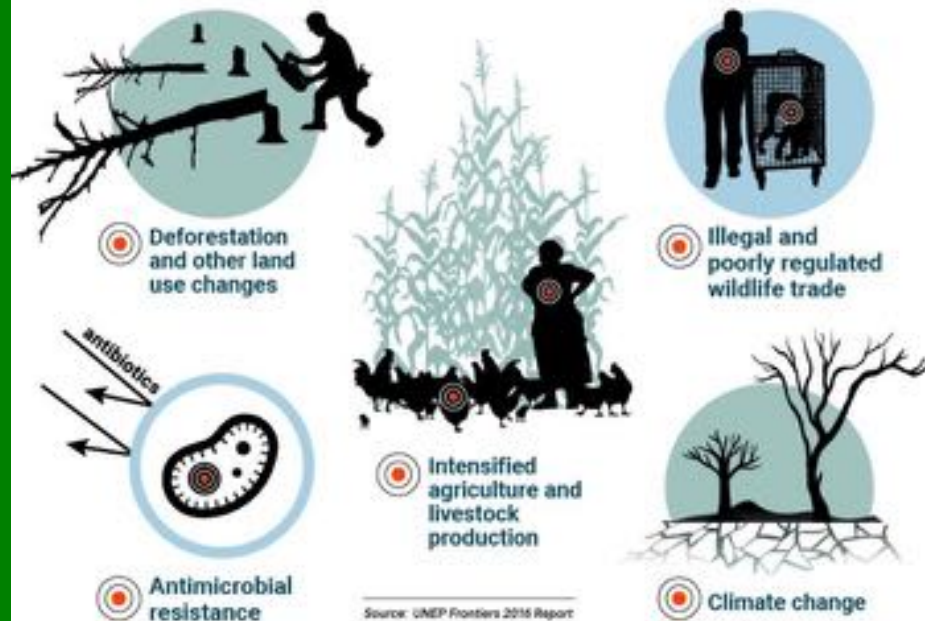
Published: 09 March 2022 | <https://doi.org/10.1098/rspb.2021.2388>



'ONE WELFARE' FRAMEWORK



What factors are increasing zoonosis emergence?
(Diseases transmitted from animals to humans)



#COVID19



'ONE WELFARE'

- ## Triple planetary crisis:
- climate change,
 - nature and biodiversity loss,
 - pollution and waste

2021 was a year in which environmental issues reached an unprecedented prominence on the global stage. The eyes of the world focused on the United Nations Climate Change Conference of the Parties (COP26) in Glasgow. While our leaders did not fully deliver, they kept the door open to holding global temperature rise to 1.5°C. Negotiators continued to flesh out the post-2020 global biodiversity framework – so that nations can reach an agreement at COP15 in 2022. Momentum to address pollution and waste grew, with nations agreeing to a global plastics treaty to tackle plastic pollution and all its impacts, and a global mercury treaty to address mercury and hazardous waste. Progress was also made at the COPs focused on the ozone layer, mercury and hazardous waste.

Despite these achievements, there is much work to do on addressing the triple planetary crisis of climate change, nature and biodiversity loss, and pollution and waste – particularly as the chance to build back better after COVID-19 appears to have been lost. The University of Oxford's Global Recovery Observatory, supported by the UN Environment Programme (UNEP), showed that less than 20 per cent of total recovery spending was green. As UNEP marks its 50th anniversary, its mission to inspire, inform and enable nations to live in harmony with nature has never been more critical.

[READ MORE](#)

'ONE WELFARE' FRAMEWORK



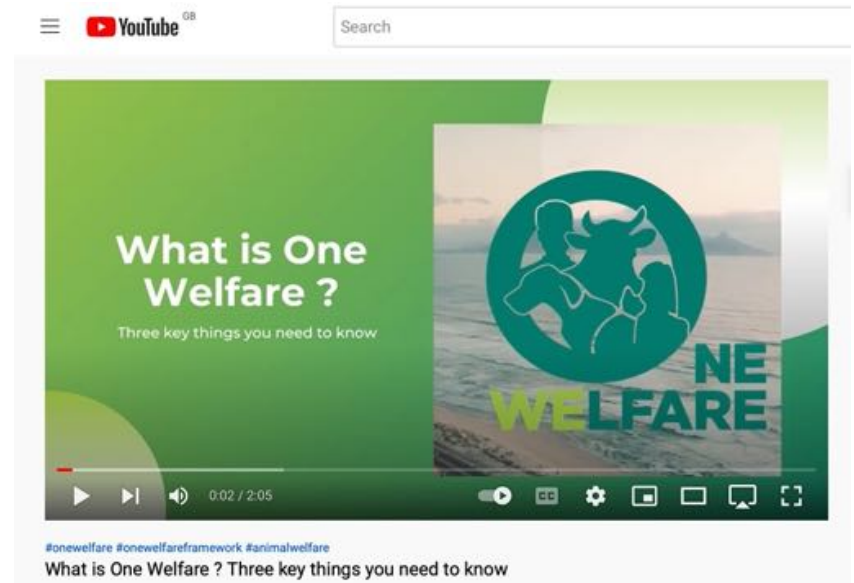
We must do everything possible to encourage collaborations 'One health, One welfare' between different professionals and sectors to maximize social benefits

The triple planetary crisis must be tackled holistically; recognizing the interconnections between animals, people, and the environment and implementing a 'One Health, One Welfare' approach.

ONE WELFARE

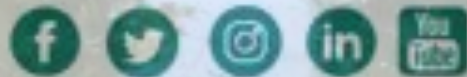
A Framework to Improve Animal
Welfare and Human Wellbeing

Rebeca García Pinillos





www.onewelfareworld.org



onewelfare

CIC No: 11376147