

ONE HEALTH

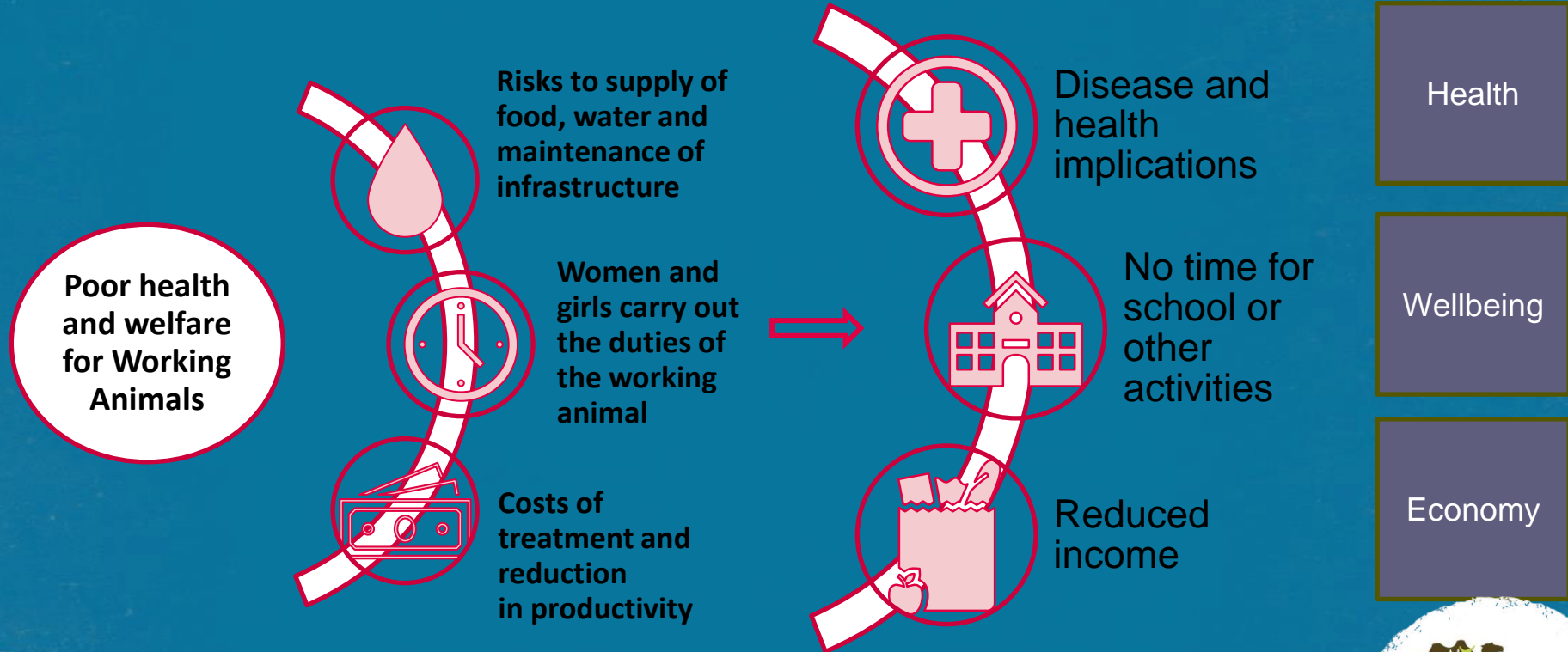
A responsible approach

September 2023



WORKING ANIMALS

The wider impact of poor animal health and welfare



IMPLICATIONS FOR COUNTRIES



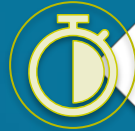
Loss of livelihoods



Reduction in food security and supply chains



Effect on infrastructure; sanitation, waste control and construction



Effect on production and transport of goods for trade



Risk of disease and the impact of zoonotic disease



TRANSFORMING THE LIVES OF WORKING ANIMALS

SPANA STRATEGY 2023-27

VISION

A world where every working animal lives a healthy and valued life

MISSION

To transform the welfare of working animals in a world where animals, people and the environment are respected and thrive

GOALS

GOAL 1: WELFARE

The quality of life improves for working animals globally, at a greater scale than ever before

GOAL 2: WORTH

The contribution working animals make to people across the world is recognised and valued

GOAL 3: WORLD

The world of working animals thrives and grows sustainably, as part of the nexus of animals, people and the environment

GOAL 4: HARNESSING OUR GLOBAL POTENTIAL

Our charity builds its reputation as a pioneering, modern and truly global organisation; a proven project partner; and an exemplar in safeguarding and governance.

BY 2027 WE WILL

- Be improving the welfare of more working animals than ever before, including in 10 countries in greatest need.
- Be making training available to more owners than ever before. Have secured two policy changes.
- Be reaching more children than ever before with animal welfare education.
- Have piloted two social business models to increase access to quality veterinary services.
- Be offering cost-recovery models.
- Be following Environmental, Social & Governance (ESG) principles.
- Have a quality assurance scheme for working animal welfare in place, following a pilot.
- Have diverse and sustainable income.
- Have an updated brand that engages supporters and reaches new audiences.
- Have a united global workforce and infrastructure.
- Be recognised as the world's leading working animal charity.



QUALITY OF LIFE FOR WORKING ANIMALS

GOAL:

The Quality of Life improves for more working animals globally, at a greater scale than ever before

A good **quality of life** requires:

that animals are recognized as a sentient being, handled and treated with compassion and recognized for their value to owners, community and country. We need:

- prevention of conditions or diseases that are avoidable; prophylactic programmes
- knowledge and behaviour change amongst humans to ensure acceptable, or even good, quality of life for working animals
- an understanding of harm caused by some traditional practices, equipment and environment
- consideration of euthanasia where pain, fear and suffering cannot be controlled



WHAT SHOULD WE CONSIDER?

- increasing access to quality professional services
- providing education to affect human behaviour change, improved animal husbandry practices and recognition of sentience.
- prevent working animals suffering from conditions that could be avoided by effective and prophylactic interventions.
- a tool to quantify Quality of Life



RISKS TO ONE HEALTH

Animal Health

- Loss of productivity
- Loss of livelihood
- Spread of disease
- Mortality
- Access to drugs
- Access to professional health services

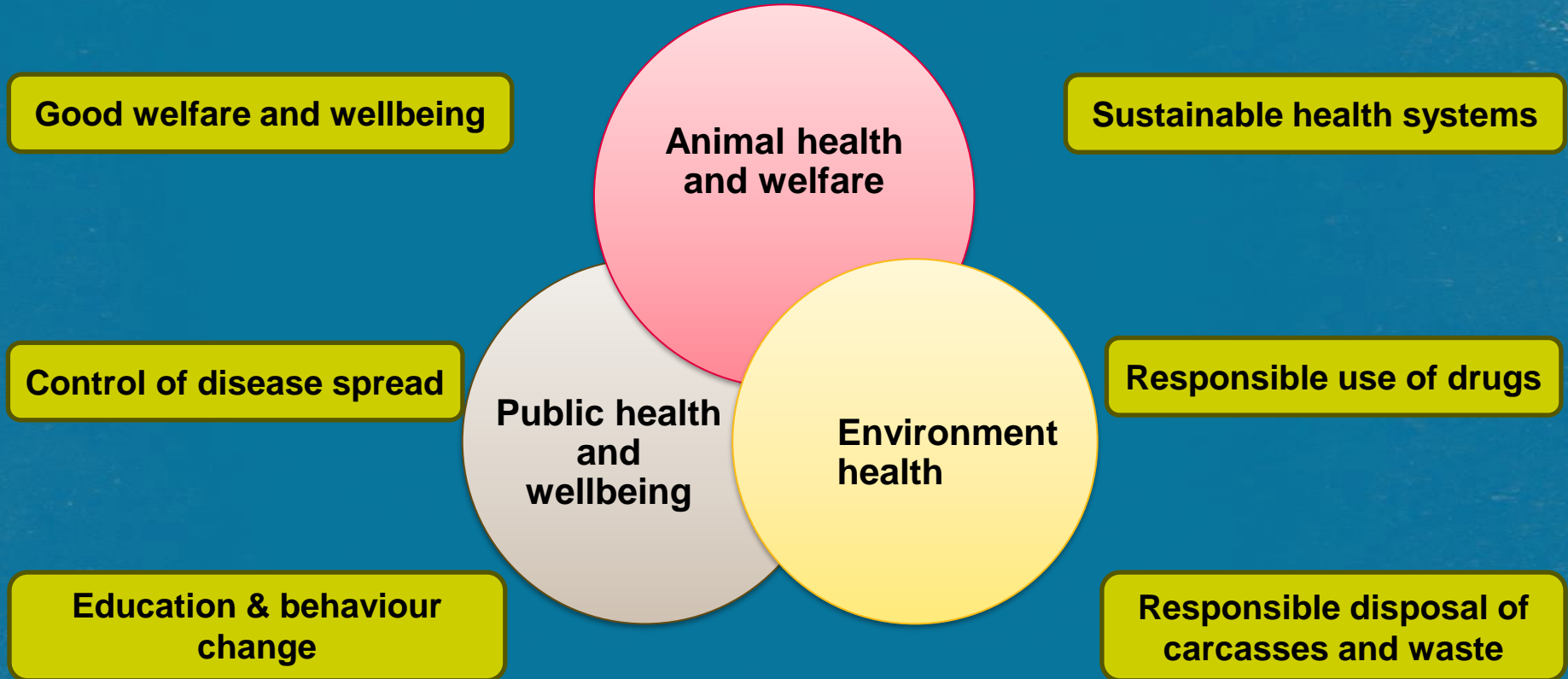
Human Health

- Access to food and water
- Loss of livelihood
- Zoonotic diseases
- Loss of opportunities
- Wellbeing of owners linked to welfare of animals

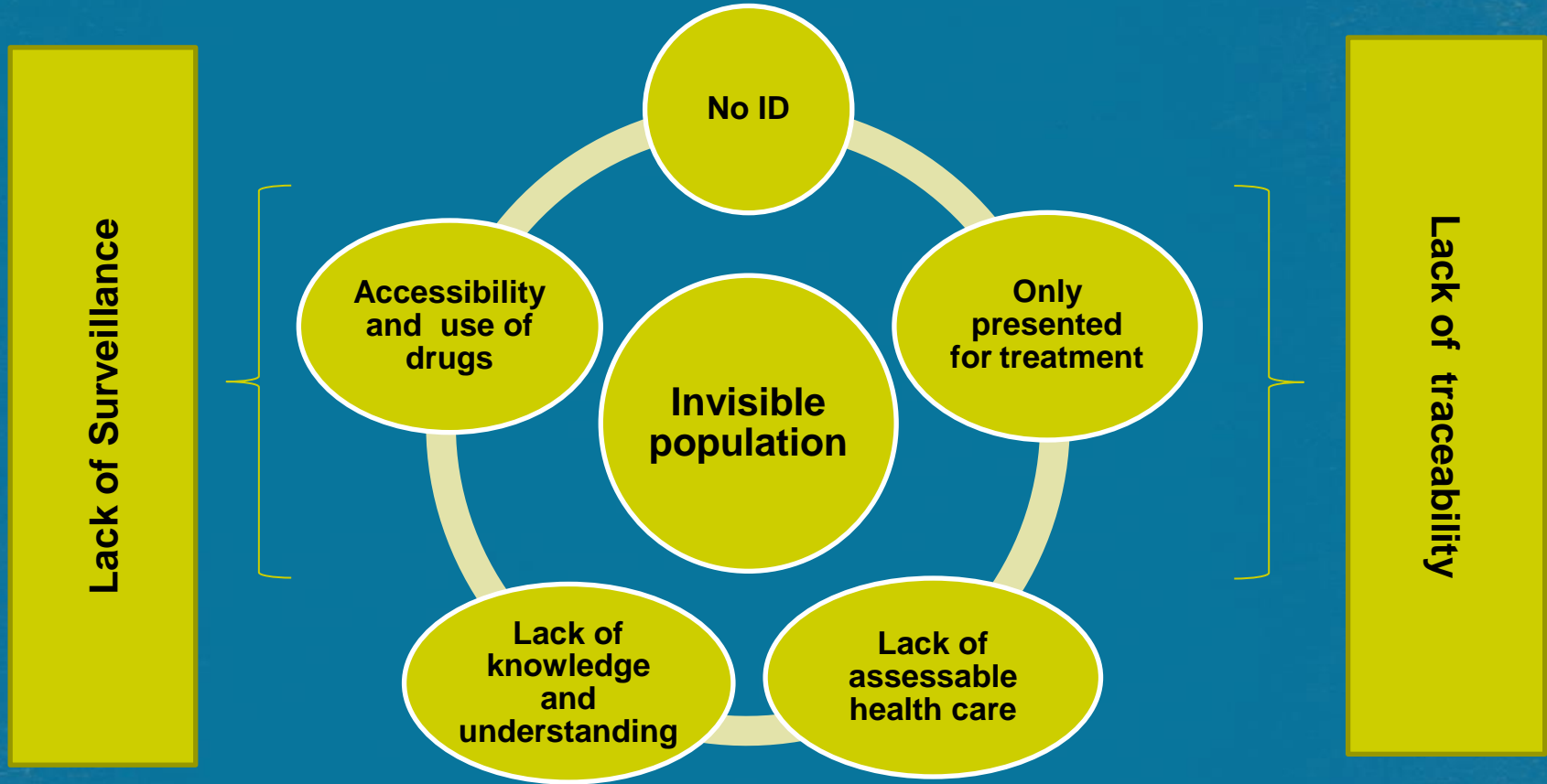
Environment

- Carcass disposal
- Contamination by infectious agents
- Contamination by chemicals and disinfectants
- Resistance to drugs
- Effect on land management

ONE HEALTH APPROACH



CHALLENGES FACED BY WORKING ANIMALS



BIOSECURITY AND OUR PLANET

Why is this important?

- Disease spread:
 - across borders
 - across species
- Contamination of our environment
 - diseased carcasses and clinical waste
 - use of chemicals for disinfectant
- A threat to:
 - public health from zoonotic infections
 - new and emerging diseases
 - country economy



RESPONSIBLE USE OF DRUGS

Avoiding resistance

- Antimicrobials:
 - challenges for use in working animals
 - dosage and completion of course
 - ethics of not treating
 - potential residues in by-products
 - the risk to One Health from resistance
- Anthelmintics:
 - Overuse
 - correct dosage
 - resistance
 - contamination of environment
 - use of FEWCs and control methods



THANK YOU

Linda Evans

Global Director of Animal Welfare SPANA

www.spana.org

